

PM-XE910-485

Industrial modem

General description

Industrial PM-XE910-485 modem has been designed the way so to offer easiest and most economical remote data transmission via most modern wireless communication networks such as GPRS, UMTS, LTE, LTE-M or NB-IoT from various industrial controllers as well different media like energy or water meters equipped with RS485 or Wireless M-Bus interface. Small, single modular housing, compliant with DIN standard, allows to mount this modem in a very hard to get places like little electrical switchboard.

Modem is power supplied with range of 9 ÷ 30 VDC therefore is adopted to work with wide range of common power supplies.

It is delivered with customized software allowing transparent TCP/IP communication with any device and protocol connected to local RS485 interface.

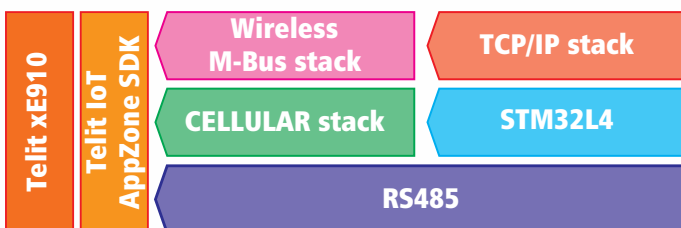
Intuitive PMConnect application significantly simplify process of local and remote modem configuration, tailored for specific project, but as well modem firmware update over the air.

Enclosed Telit IoT AppZone SDK toolchain allows the user to develop own, made to measure software application. Here we have 5MB FLASH and 2MB RAM memory available to be used for user customized C language software application.

Modem can be equipped with an additional Wireless M-Bus 868 MHz radio functionality making off the modem classical data concentrator/gateway for various devices such as energy, water, heat or gas meters.

Features

- Cellular GPRS, UMTS, LTE, LTE-M or NB-IoT Telit XE910 series module
 - RS485 Interface for external devices communication
 - Single modular DIN Housing
- LED indicators presenting modem status and data transmission
 - Optional Wireless M-Bus 868 MHz functionality
- Telit IoT AppZone SDK software environment for customized C language based software
 - PMConnect configuration tool
 - Wide range of power supply 9 ÷ 30 VDC





PM-XE910-485

General Technical Specification

RS485 Interface

Screwing Terminal Connector
Data+, Data-
Half-Duplex

USB Interface

microUSB - programming and local modem configuration

Power

Screwing Terminal Connector
9 ÷ 30 VDC

Dimensions

17.5mm x 90.0mm x 70.0mm

Antenna Interfaces

1 x SMB connector dedicated for external cellular GSM/UMTS/LTE antenna
1 x SMB connector dedicated for external Wireless M-Bus antenna *

LED

4 x LED status indicators

SIM

SIMHolder in 3FF (microSIM) standard
VQFN (simCHIP) ready - prepared soldering space
Dual-SIM - possibility of switching between 3FF and VQFN
Telit simWISE - internal eUICC profiles service**

Operating Temperature

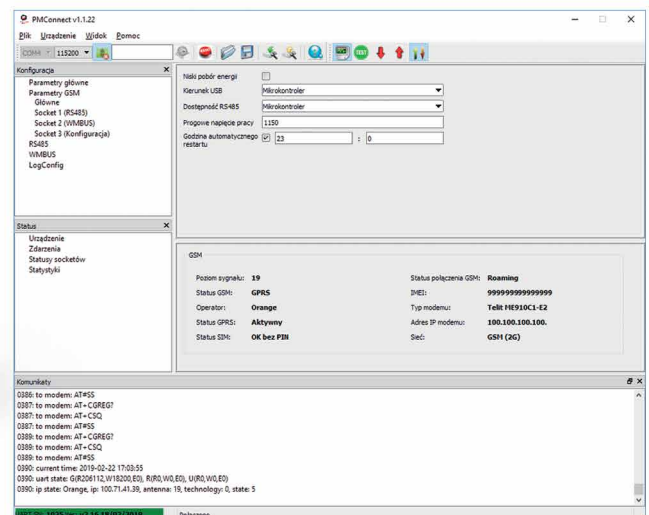
-30°C ÷ 60°C

Available modem versions

- **PM-xE910-485-M2**
LTE-M/NB-IoT/GSM/GPRS
- **PM-xE910-485-L1**
LTE/UMTS/HSPA/GSM/GPRS
- **PM-xE910-485-2G**
GSM/GPRS

SDK***

Telit IoT AppZone simplifies application design with advanced and easy to use tools and APIs. Out-of-the-box integration with IoT cloud services, 5MB FLASH, 2MB RAM memory available for custom C based application.



* Additional SMB connector present only at the module with the Wireless M-Bus functionality

** Additional information on simWISE as well available modem versions to be delivered upon request

*** Additional information on Telit IoT AppZone SDK as well available modem versions to be delivered upon request